

MIDDLE HARBOUR 16FT SKIFF SAILING CLUB



16FT and 13FT SKIFF

2024/2025 SAILING INSTRUCTIONS

(1) Rules

Racing at the Middle Harbour 16ft Skiff Sailing Club (the Club) will be governed by these Sailing Instructions, the current Racing Rules of Sailing (RRS), the Prescriptions and Special Regulations of Australian Sailing and the rules of the Australian & New South Wales 16ft Skiff Associations. To the extent that there is an inconsistency between these rules, these Sailing Instructions prevail over the RRS, which in turn prevail over the Prescriptions and Special Regulations of Australian Sailing, which in turn prevail over the rules of the Australian & New South Wales 16ft Skiff Associations.

- (1) All Skiffs while afloat shall carry the following safety equipment:
 - (i) A shackle key to unfasten or unrig.
 - (ii) Each Skiff must carry a Sheathed Knife capable of cutting webbing and rope and it should be located in an easily accessible position.
 - (iii) An orange flag or similar (approx. size 600mmx200mm) to be displayed or waved in an overhead arc in the event that the skiff requires immediate outside assistance.
- (2) RRS 50.1(b) is changed to - A hiking or trapeze harness shall have positive buoyancy and shall not weigh more than 3kilograms.

(2) Disclaimer

- (1) All those taking part in Club racing do so at their own risk and are responsible for their own safety: see RRS 4.
- (2) The Club, its servants and agents and all parties involved with its organisation and the organisation of racing at the Club disclaim all responsibility whatsoever for any loss, damage, injury, death or inconvenience to person or goods, both ashore and at sea, as a consequence of participation in races covered by these Sailing Instructions.

(3) Notices to competitors

- (1) Notices to competitors will be posted on the official notice board located inside the southern entry to the boatshed and via the sailors' WhatsApp group.
- (2) A briefing for competitors, race officials and support crew may be held 90 minutes before the start of the first race of the day.

(4) Changes in Sailing Instructions

- (1) Any change to the Sailing Instructions will be posted on the official notice board before 12:30 hours on the day it will take effect.
- (2) Any change to the schedule of races will be posted on the official notice board by 20:00 hours on the day before it will take effect.

PART 1—RACING GENERALLY

(5) Eligibility to race

- (1) For a boat to be eligible to race, it must be registered with the New South Wales 16ft Skiff Association, the Australian 16ft Skiff Association, be registered with the Club. Registration for the associations can be done online at skiffs.org.au
- (2) 16ft Skiffs must hold a current measurement certificate that can be produced on demand.
- (3) For a sailor to be eligible to race, he or she must be a member of Sailing Australia and a member of an affiliated sailing club.
- (4) For a sailor to be eligible to race in more than three races at the Club, he or she must be a sailing member of the Club.
- (5) Any boat that fails to submit all required documents, obtain all required registrations and make all required payments by close of business on the first day of racing may be scored DNS for each race until all required documents have been submitted, registrations have been obtained and payments have been made.
- (6) Any change of skipper shall be notified in writing to the Race Secretary at least one hour prior to the scheduled start time of the race.
- (7) All boats must sail under the ensign registered with the New South Wales 16ft Skiff Association. Any change in ensign must be notified to the Starter in writing at least one hour prior to the scheduled start time of the race.
- (8) All boats must be checked, measured and weighed for compliance with the Class Rules by the Club Measurer. Anyone with new equipment is responsible for contacting the Club Measurer and organising the measurement and certification of the equipment.
- (9) The Club Measurer may, before or after any race and on his or her own initiative, inspect any boat that he or she suspects is not compliant with the Class Rules.
- (10) For permission to use equipment that does not comply with the Class Rules, an application must be made in writing to the Race Secretary and put to a vote of the sailors at a sailing meeting or at a briefing on the race day.

(6) Signals made ashore

- (1) Signals made ashore will be displayed on the Club flagpole, which is located on the north-eastern corner of the upper deck, or if the flagpole cannot be accessed, then from the committee boat anchored in front of the clubhouse. They shall also be communicated via the sailors' WhatsApp group.
- (2) When the AP is displayed ashore, the warning signal will be made not less than 60 minutes after AP is lowered. This amends Race Signal 'AP'.

(7) Schedule of races

- (1) Races are scheduled as per the calendar published on the Club website and displayed on the official notice board.
- (2) Outside of daylight savings:
 - (a) No warning signal for a race shall be made after 15:45 hours.

- (3) During daylight savings:
 - (a) No warning signal for a race shall be made after 16:30 hours.

(8) Penalties

- (1) RRS 44.1 is changed so that the Two-Turns Penalty is replaced by the One-Turn Penalty.

(9) The racing area and courses

- (1) The Starter shall set the course for each race in accordance with sections (20) to 30 of these Sailing Instructions.
- (2) No later than the warning signal, a board indicating the compass bearing or general direction and a numeral flag indicating the number of times to the windward mark will be displayed on the committee boat.
- (3) Where the course is a gated course, boats are not required to pass through the gate on the final downwind leg to the finish.

(10) Class flags

- (1) The 16ft Skiff class flag is a black '16' displayed on a white background.
- (2) The 13ft Skiff class flag is the 13ft Skiff logo displayed on a white background.

(11) Marks and Mark Room

- (1) Unless otherwise indicated, the rounding marks are large yellow or orange conical inflatables with MH16SC printed in black.
- (2) The committee and support boats shall fly the Club burgee.
- (3) The change of course mark is a large yellow cylindrical inflatable with a black band.
- (4) For the purpose of defining the zone, the 'hull' is defined from the stern to the end of the spinnaker pole. This changes the definition for the term zone in the RRS Definitions and is commonly referred to in RRS 18.
- (5) The definition of the "zone" is also changed from 3 hull lengths to 25 metres.

(12) The start

- (1) The start line shall be between a staff displaying an orange flag on the committee boat at the starboard end and a mark displaying an orange flag on the port end.
- (2) A boat seen in the vicinity of the starting line after the warning signal will be counted as a starter even if it does not actually start. This amends RRS Appendix A4.
- (3) A boat not seen in the vicinity of the start line after the warning signal and attempting to start later than 10 minutes after her starting signal will be scored DNS. This amends RRS Appendix A4.
- (4) A boat whose warning signal has not been made shall avoid the starting area during the start sequence for other races.
- (5) All races shall have a five-minute start sequence, except for the races in the Sprint series.

- (6) For the purposes of RRS 29 and RRS 30, the 'hull' is defined between the stern and the bow (stem) of the boat.
- (7) The start sequence shall include the following signals:

Signal	Flag and sound	Minutes (standard)	Minutes (Sprint Series)
Warning signal	Class flag and 1 sound	5	3
Preparatory signal	P Flag, I Flag, U Flag, Z Flag or Black Flag and 1 sound	4	2
One-minute signal	Preparatory flag removed and 1 long sound	1	1
Starting signal	Class flag removed and 1 sound	0	0

(13) The finish

- (1) For a non-gated course, boats shall sail upwind through the finishing line, except for the Southeast (135°) official course which shall have a downwind finish. The finish line shall be between a staff displaying an orange flag on the committee boat at the starboard end and a mark displaying an orange flag at the port end except for the finish of a Southeast course race where the finish line will be between a staff displaying an orange flag on the committee boat at the port end of the line and a mark displaying an orange flag at the starboard end.
- (2) For a gated course, boats shall sail downwind through the finishing line, which shall be between a staff displaying an orange flag on the committee boat at the port end and a mark displaying an orange flag at the starboard end and are permitted to sail under spinnaker whilst doing so.
- (3) The committee boat will display a blue flag when it is on the finishing line.

(14) Shortening of course after the start

- (1) The Starter may shorten the course after the start in accordance with RRS 32.
- (2) The Starter may also shorten the course if he or she is of the opinion that the majority of the fleet will not finish in the time limit.

(15) Abandoning of race after the start

- (1) The Starter may abandon the race after the start in accordance with RRS 32.

(16) Safety requirements

- (1) Notwithstanding that sailors are responsible for their own safety in accordance with section (3):

- (a) All sailors shall comply with Specific Regulation R1 (Personal Buoyancy) by wearing, whilst afloat, an approved personal flotation device.
- (b) Any boat that retires from a race must notify the Starter as soon as possible, either on course or by contacting the Starter immediately upon arriving ashore.

(17) Scoring generally

- (1) The Low Point System and other relevant provisions of the RRS Appendix A shall apply, except that a boat that scores DNC will be awarded points equal to the number of boats that are registered with the Club on the date of the race plus two (2) places. This amends RRS A9.
- (2) Notwithstanding 17.1 above, for the purposes of these Sailing Instructions with respect to a boat that comes to the starting area but did not start, did not sail the course, did not finish, retired or was disqualified then Rule A5.3 shall apply.
- (3) Average points:
 - (a) Any boat that represents the Club in the New South Wales State 16ft Skiff Championships or an inter-club regatta sanctioned by the New South Wales 16ft Skiff Association shall be awarded average points for, and be deemed to have sailed in, any race conducted by the Club on the same day as that Championship or regatta.
 - (b) Average points shall be calculated using the average score of the boat in the last three consecutive Point Score races sailed prior to the Championship or regatta, unless three consecutive Point Score races have not been completed, in which case average points shall be calculated using the average score of the boat in the three Point Score races closest to the Championship or regatta, either before or after the Championship or regatta but only including results from the 2024/2025 sailing season.

(18) Protests

- (1) Any boat wishing to protest against another for an incident in the racing area shall conspicuously display a red flag at the first reasonable opportunity and continue to display it until it is no longer racing: this amends RRS 61.1(a)(2).
- (2) Protests shall be made in writing and submitted to the Starter within 60 minutes after the time of the finish of the last boat: this amends RRS 61.3.
- (3) The Protest Committee elected at the preceding Annual General Sailing Meeting shall hear all protests. If a member of the Protest Committee has a vested interest in the protest, the Starter shall take the place of that member, or nominate a suitable disinterested person to take the place of that member.
- (4) As required by RRS 63.2, protest notices will be posted on the official notice board within 30 minutes of the protest time limit to inform competitors of the time and location of a protest hearing to which they are parties or in which they named as witnesses. The posting of such notice is notification to all parties for the purpose of RRS 63.2.
- (5) The “authority” for the purposes of RRS 64.3(b) is the Club Measurer.

PART 2—TYPES OF RACES

(19) The racing program.

- (1) The racing programme shall include the following types of races:
 - (a) Club Championship races.
 - (b) Crews Trophy
 - (c) Long Course Pointscore races
 - (d) Short Course Championship.
 - (e) Sprint races
 - (f) Other races.
- (2) Instructions and scoring for each type of race are set out in sections 22 to 30.

(20) The Club Championship – 16' Skiffs

- (1) Each race in the Club Championship shall be sailed on the Official Courses as depicted in Addendum A to these Sailing Instructions, unless the Starter deems it inappropriate for whatever reason to sail on the Official Courses, in which case the Starter may set a different course.
- (2) The target time for each race shall be 90 minutes. The time limit for each race shall be 3 hours from the last starting signal, or 40 minutes from the finishing time of the first boat, whichever is shorter. A boat that fails to finish within the time limit shall be scored DNF. This changes RRS 35 and Appendix A4.
- (3) Each race of the Club Championship shall have a scratch start.
- (4) Scoring:
 - (a) Seven races are scheduled for the series.
 - (b) Five races are required to be completed to constitute a series.
 - (c) If five races are completed the overall score of each boat will be its total race scores without discard.
 - (d) If six or more races are completed, the overall score of each boat will be the total of its race scores minus its worst score.
 - (e) Points are awarded based on the scratch results.

The Club Championship – 13' Skiffs

- (1) Races in the 13' Skiff Club Championship shall be sailed on the Official Courses as depicted in Addendum A to these Sailing Instructions and on Gated Compass Bearing courses as depicted in Addendum B to these Sailing Instructions, unless the Starter deems it inappropriate for whatever reason to sail on the Official Courses, in which case the Starter may set a different course.
- (2) The target time for 13' Skiff Club Championship races shall be 90 minutes. The time limit for each race shall be 2 hours from the last starting signal, or 30 minutes from the finishing time of the first boat, whichever is shorter. A boat

that fails to finish within the time limit shall be scored DNF. This changes RRS 35 and Appendix A4.

- (3) Each race of the Club Championship shall have a scratch start.
- (4) Scoring:
 - (a) 7 races are scheduled for the series.
 - (b) Five races are required to be completed to constitute a series.
 - (c) If five races are completed the overall score of each boat will be its total race scores without discard.
 - (d) If six or more races are completed, the overall score of each boat will be the total of its race scores minus its worst score.
 - (e) Points are awarded based on scratch results.

(21) The Crews Trophy -16' Skiffs

- (1) Each race in the Crews Trophy shall comprise laps of a gated compass-bearing course as depicted in Addendum B to these Sailing Instructions. The course shall be set in the Sound, unless the Starter deems it inappropriate for whatever reason to sail in the Sound, in which case the Starter may set a different course.
- (2) The target time for each race shall be 45 minutes. The time limit for each race shall be 65 minutes from the last starting signal, or 20 minutes from the finishing time of the first boat, whichever is shorter. A boat that fails to finish within the time limit shall be scored DNF. This changes RRS 35 and Appendix A4.
- (3) Races 1,3,5,7 & 9 shall have a handicap start. All other races shall have a scratch start.
- (4) Scoring:
 - (a) Ten races are scheduled for the series.
 - (b) Six races are required to be completed to constitute a series.
 - (c) If seven or more races are completed, the overall score of each boat shall be the total of its race scores minus its worst score.
 - (d) Points are awarded based on the handicap results.

(22) Short Course Championship – 13' Skiffs

- (1) Each race in the Crews Trophy shall comprise laps of a gated compass-bearing course as depicted in Addendum B to these Sailing Instructions. The course shall be set in the Sound, unless the Starter deems it inappropriate for whatever reason to sail in the Sound, in which case the Starter may set a different course.
- (2) The target time for each race shall be 45 minutes. The time limit for each race shall be 65 minutes from the last starting signal, or 20 minutes from the finishing time of the first boat, whichever is shorter. A boat that fails to finish within the time limit shall be scored DNF. This changes RRS 35 and Appendix A4.
- (3) Each race of the Short Course Championship will have a scratch start
- (4) Scoring:
 - (a) Ten races are scheduled for the series.
 - (b) Six races are required to be completed to constitute a series.
 - (c) If seven or more races are completed, the overall score of each boat will be the total of its race scores minus its worst score.

- (d) Points are awarded based on the scratch results.

(23) Long Course Pointscore Championship -13' Skiffs

- (1) The Long Course Pointscore Championship shall be conducted on the Official Courses as depicted in Addendum A to these Sailing Instructions unless the Starter deems it inappropriate for whatever reason to sail on the Official Courses, in which case the Starter may set a different course.
- (2) The target time for each race shall be 90 minutes. The time limit for each race shall be 2 hours from the last starting signal, or 30 minutes from the finishing time of the first boat, whichever is shorter. A boat that fails to finish within the time limit shall be scored DNF. This changes RRS 35 and Appendix A4.
- (3) Each race shall have a scratch start.
- (4) Scoring:
 - (a) Fourteen races are scheduled for the series.
 - (b) Six races are required to be completed to constitute a series.
 - (c) If seven to ten races are completed, the overall score of each boat will be the total of its race scores minus its worst score.
 - (d) If eleven to fourteen races are completed, the overall score of each boat will be the total of its race score minus its two worst scores.
 - (e) Points are awarded based on handicap results.

PART 3—THE POINT SCORES and SPRINT SERIES

(24) The Scratch Point Score -16' Skiffs only

- (1) Points in the Scratch Point Score are awarded based on the scratch results from each Club Championship race, the Long Course Pointscore races, and any other race designated by the calendar to be a Point Score race.
- (2) A total of eight races across both halves point score series are required to be completed to constitute the overall Scratch Point Score.
- (3) A boat's overall score will be a combination of its total scores from each of the first and second half Scratch Point Score series.

(25) The Handicap Point Score – 16' Skiffs only

- (1) Points in the Handicap Point Score are awarded based on the handicap results from each Club Championship race, the Long Course Pointscore races and any other race designated by the calendar to be a Point Score race.
- (2) A total of eight races across both halves point score series are required to be completed to constitute the overall Handicap Point Score.
- (3) A boat's overall score will be a combination of its total scores from each of the first and second half Handicap Point Score series.

(26) The First Half Point Scores - 16' Skiffs only

- (1) The first half of the Scratch and Handicap Point Scores shall comprise the first to seventh Point Score races scheduled in the calendar.
- (2) Four races are required to be completed to constitute a series.
- (3) If six to seven races are completed, the overall score of each boat will be the total of its race scores minus its worst score.

(27) The Second Half Point Scores – 16' Skiffs only

- (1) The second half of the Scratch and Handicap Point Scores shall comprise the eighth to fourteenth Point Score races scheduled in the calendar.
- (2) Four races are required to be completed to constitute a series.
- (3) If six to seven races are completed, the overall score of each boat will be the total of its race scores minus its worst score.

(28) The Sprint Series- All Classes

- (1) The Sprint Series shall comprise 9-12 races.
- (2) Six races are required to constitute a series.
- (3) All races shall count towards a boat's series score.
- (4) Sprint races will be conducted on a gated windward/leeward course.
- (5) Starts will be a 3 minute sequence.
- (6) Target time for each race shall be 20 minutes with a maximum time of 40 mins.
- (7) Any boat failing to finish within 5 minutes of the first boat shall be scored DNF.

PART 4—HANDICAPPING

(29) Handicap rules

- (1) The Time Correction Factor (TCF, time based handicap) for each series shall be adjusted using the SailSys PHS (Performance Handicapping System).
- (2) A boat's handicap may be changed at any time at the discretion of the handicapping committee.
- (3) TCF will not be grounds for protest or redress. This alters RRS 60.1 and RRS 62.

PART 5—TROPHIES, PRIZES AND PRIZE MONEY

(30) Eligibility

- (1) Trophies, prizes and prize money are awarded at the discretion of the Board.
- (2) To be eligible to win the Club Championship, a boat must have sailed in 70% of Point Score races.

- (3) To be eligible to receive full payment of prize money, a boat must be represented by at least one member of its regular crew for at least five of the seven scheduled sailing meetings.
- (4) Any boat represented in less than five of the meetings shall receive prize money in accordance with the following table.

Meetings attended	Percentage of prize money payable
5-7	100%
4	90%
3	80%
2	70%
1	60%
0	50%

- (5) Any prize money not paid due to sections 27(4) shall be returned to the total pool and redistributed among the other boats according to the results of the season.

ADDENDUM A—OFFICIAL CLUB COURSES

The Official Club Courses are windward-leeward courses.

The positions of the marks and the start and finish lines depicted in the accompanying diagrams are approximate.

The marks of all courses other than the North-Easterly and Easterly Courses are to be rounded to Port. The marks of the North-Easterly and Easterly Courses are to be rounded to Starboard. The Committee vessel may fly a green or red flag to indicate the side to which marks should be left when rounding.

The marks of all courses, other than the bottom mark for the North-Easterly Course, will be marks owned by the Club. The bottom mark for the North-Easterly course will be the AS mark at Balmoral East: Rocky Point. In the event that, for any reason, the Starter does not believe skiffs can use the AS mark then a Club owned mark may be laid to windward of the AS mark in the general vicinity of a transit between Grotto Point and Cobblers Beach. This change to the official Nor. East course will be displayed as NE2 prior to the warning signal.

The Starter will indicate the course to be sailed by displaying the abbreviation of the general direction of the top mark of the course. E.g., NE = North East, S/SE = South/ South East etc.

The Starter will set the number of laps and the position of the top mark at the number and position necessary for the first boat to complete the race within 90 to 100 minutes.

The Starter will indicate the number of laps to be sailed by flying a numeral pennant indicating the number of times the fleet must round the top mark. . The numeral pennant shall be flown prior to or at the first warning signal for each fleet.

1 lap = S-A-B-F

2 laps = S-A-B-A-B-F

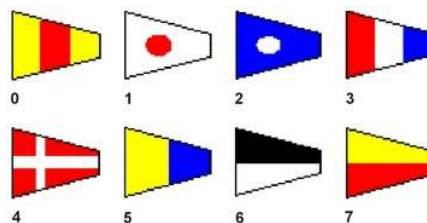
3 laps = S-A-B-A-B-A-B-F

4 laps = S-A-B-A-B-A-B-A-B-F

5 laps = S-A-B-A-B-A-B-A-B-A-B-F

6 laps = S-A-B-A-B-A-B-A-B-A-B-A-B-F

** Note: For the Southeast (135°) course all finishes shall be A-F



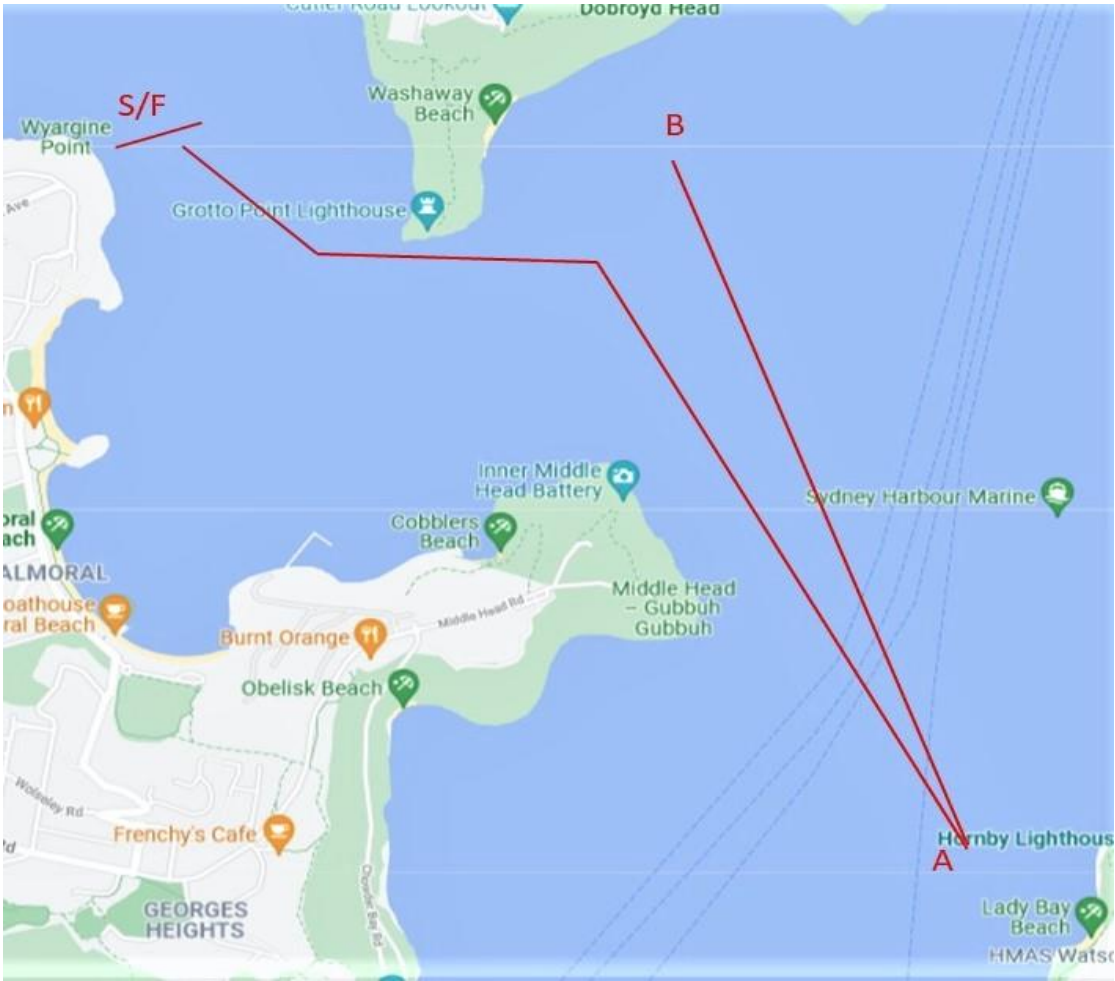
NORTH-EASTERLY (45°) COURSE



EASTERLY (90°) COURSE



SOUTH-EASTERLY (135°) COURSE



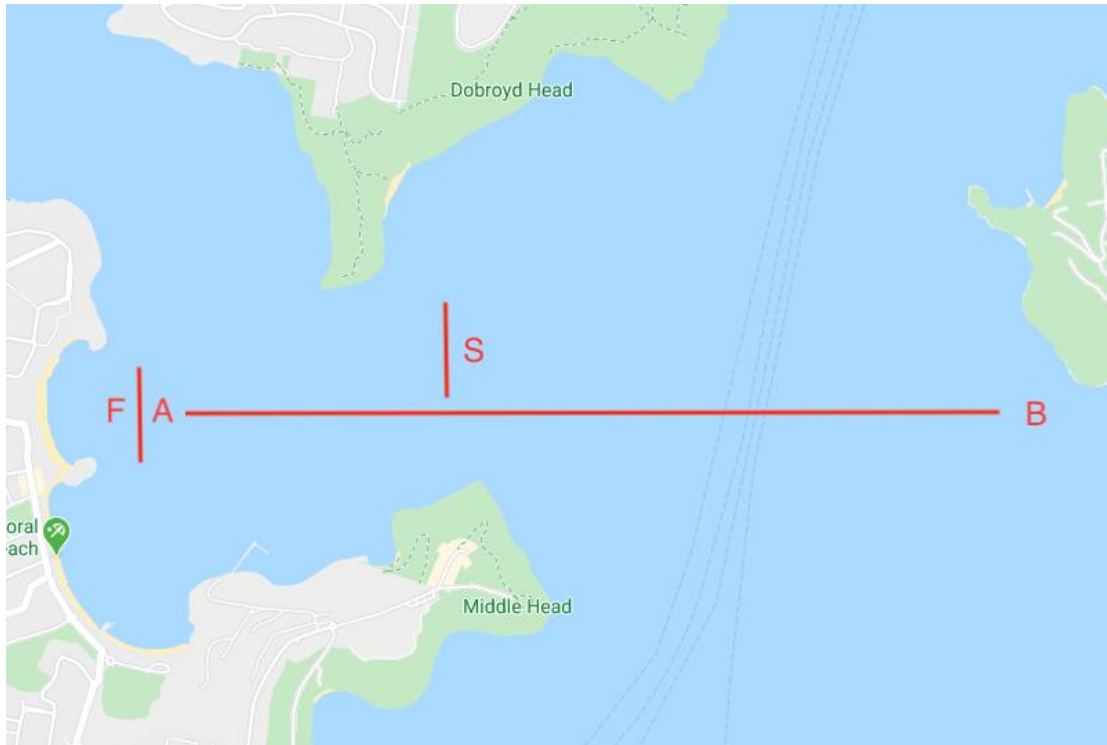
SOUTHERLY (180°) COURSE



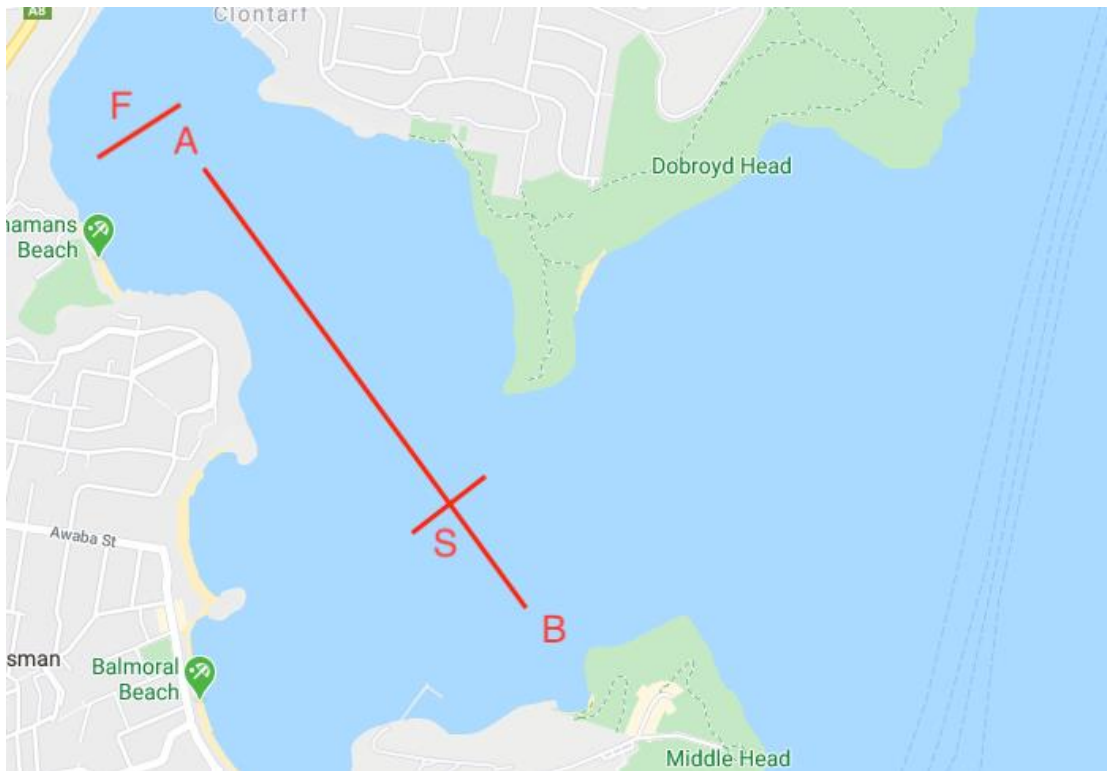
SOUTH-WESTERLY (225°) COURSE



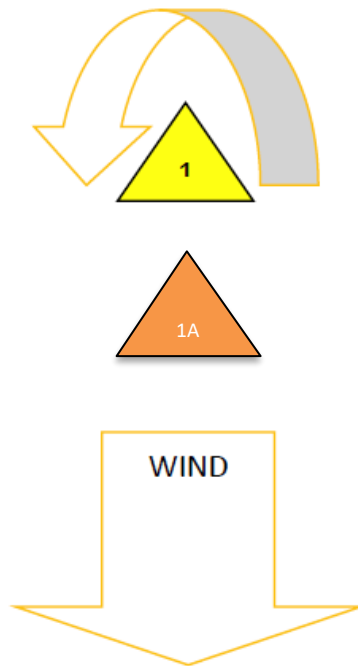
WESTERLY (270°) COURSE



NORTH-WESTERLY (315°) COURSE

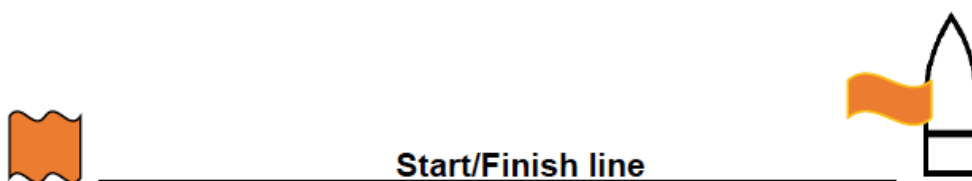
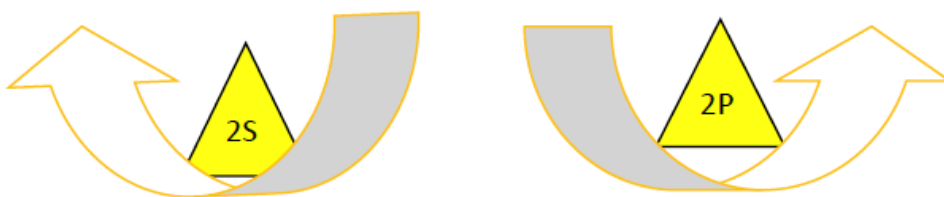


ADDENDUM B—GATED COMPASS-BEARING COURSE



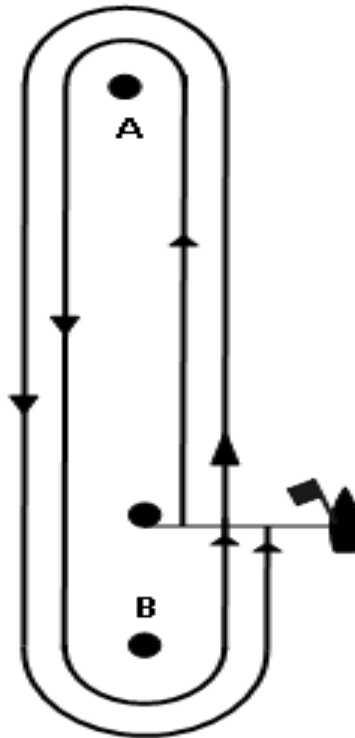
Note: The Starter will set an alternate top mark (1A) for the 13ft Skiff fleet which will be an orange inflatable conical mark printed with MH16SC in black.

Skiffs may round either Mark 2P or 2S



ADDENDUM C – HEAVY WEATHER COURSE.

In the event the Starter does not deem it safe enough to sail a race on an Official Club Course the Starter will fly Code Flags “C” over “H” indicating that racing will take place on the compass bearing Heavy Weather Course as shown below:



Approximate compass bearing of the windward mark “A” will be displayed on a board and a numeral pennant will be flown indicating the number times to sail to the windward mark. A boat is not obliged to pass through the start/finish line whilst competing in a race other than to start and finish that race.